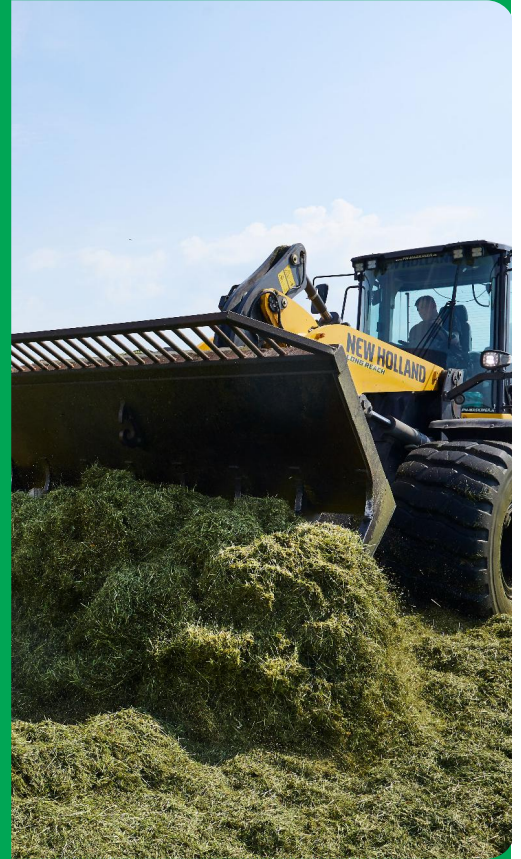


SAQUI

Lolium perenne

- High yielding late diploid perennial ryegrass
- High cell wall digestibility – DLF FiberEnergy
- Very persistent
- Dense growth



All-in-one solution

The big advantage of this variety is the all-in-one solution. It has shown a very high yield in trials. It is persistent and has, in addition, a very high cell wall digestibility which leads to a high feeding quality. Because SAQUI has a dense growth that is characteristic for competitive varieties it leaves no space for weed to establish in the field.

No weak point

All in all it is difficult to find a weak point in SAQUI. The good characters, SAQUI hold makes it evident that is the variety to choose if you are looking for a "reliable" variety in a forage grass mixture.

Persistent variety

The good agronomic qualities in SAQUI can be used in grazing management as well as in cut regimes and all possible managements in between.

Because SAQUI has proven very persistent it is useful also in sustainable managements for increased CO₂

DLF Global Head Office

Ny Oestergade 9 | 4000 Roskilde | Denmark

Technical Specifications

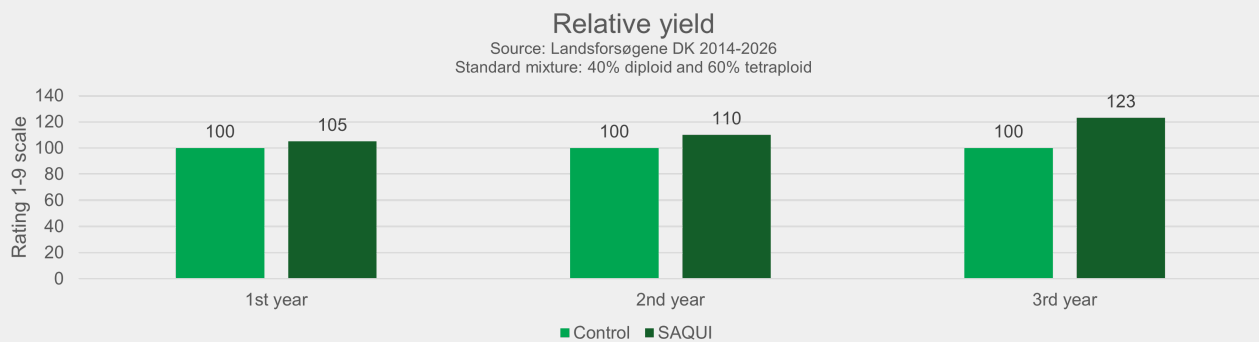
- Perennial ryegrass
- A high yielding, persistent and dense variety
- Listed/recommended in EU DK PL
- LATE

Specification and ratings

Relative yield

Source: Landsforsøgene DK 2014-2016

Standard mixture: 40 % diploid and 60 % tetraploid



Ratings

Scale 1-9, where 9 = best or most pronounced

