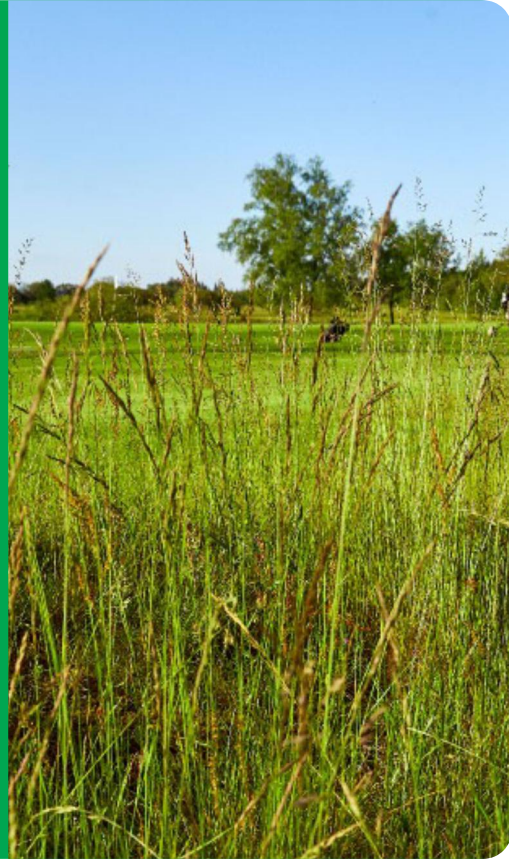


RHIZING STAR

Festuca arundinacea

- Excellent for sod
- Disease resistant
- Good wear tolerance
- Self repairing



4salt

Excellent for sod and self-repair

RHIZING STAR is a rhizomateous tall fescue characterized by the ability to form new plants off the mother plant via a system of rhizomes.

This lateral spreading results in a webbed turf having excellent wear tolerance and self repairing properties.

RHIZING STAR is attractive medium dark green with leaves that are moderately fine textured, and is resistant to Brown Patch and other common turf diseases.

This heat tolerant variety is also endophyte enhanced for a natural defense against damage from surface feeding insects.

RHIZING STAR is recommended for permanent turf in full or partial sun on golf course roughs and out-of-bounds areas and other low maintenance sites.

DLF Global Head Office

Ny Oestergade 9 | 4000 Roskilde | Denmark

Technical Specifications

- Tall fescue
- Self repairing & drought tolerant
- Listed/recommended in TR

Ratings

Scale 1-9, where 9 = best or most pronounced

