

KUFUGA

Lolium perenne

- Very high 1st cut
- Fast regrowth after cutting
- Good disease tolerance = healthy forage
- High total drymatter production



Cutting type variety with high total yield

The drymatter yield of Kufuga in the 1st cut has got the score of 8 in the BSA rating. At the time of listing, it was the only variety in this heading segment with such a high score.

The scores for early growth and height (6) at growth start are also very good. All in all these scores confirm the merit of the high score for 1st cut yield.

In the regions where winter kill is a problem, Kufuga showed good survival (persistency) with fast growth in the spring, with a net advantage over other varieties.

In comparison with similar varieties of the heading segment, Kufuga shows an increase in total yield of 3%

Excellent disease tolerance

Kufuga shows excellent resistance to rusts and leaf spot diseases, making a contribution to healthy forage throughout the growing season.

Technical Specifications

- Perennial ryegrass
- Intermediate heading, high yielding tetraploid conservation type
- Listed/recommended in EU BE DE
- Lateness: Intermediate

Specification and ratings

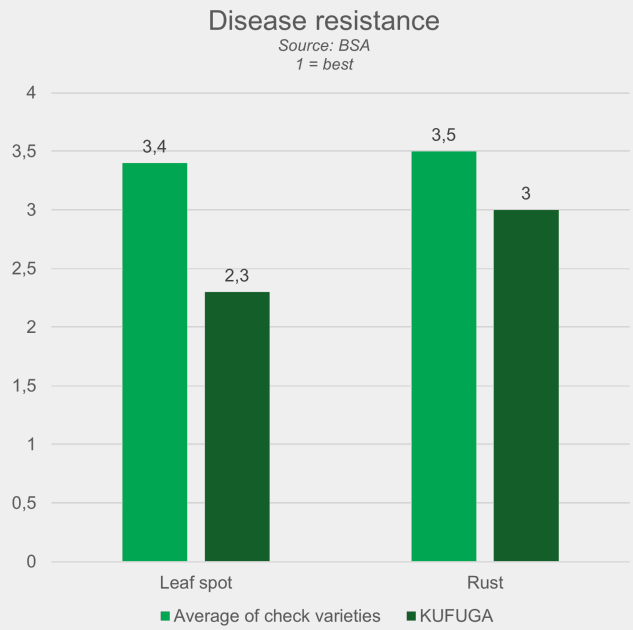
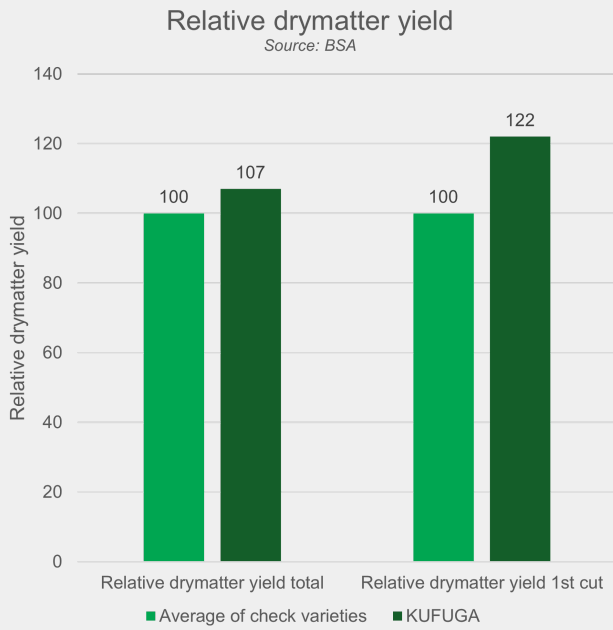
Relative drymatter yield

Source: BSA

Disease resistance

Source: BSA

1 = best



Ratings

Scale 1-9, where 9 = best or most pronounced

